

BAUPACK-LT: PUMP CONTROL PACK

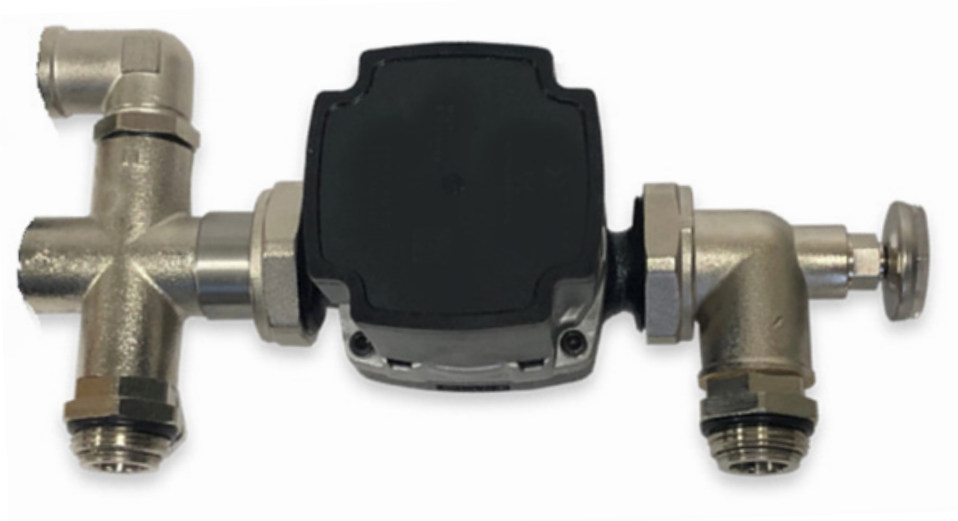
Manifold



PRODUCT DESCRIPTION

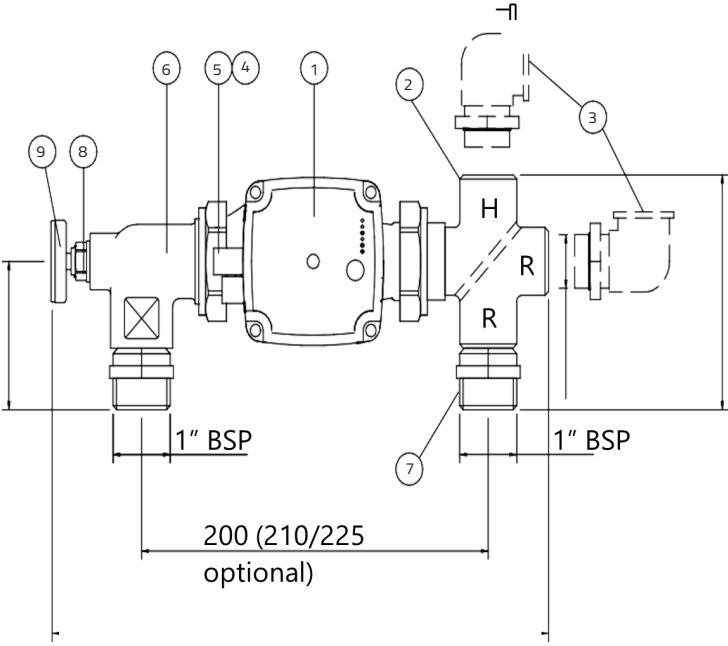
Provides control of flow and return water temperature in an underfloor heating system when using a heat pump or low temperature system. Pre-assembled and tested to ensure that it can be fitted with minimum on-site labour required and commissioned immediately once fitted.

Designed to connect to the left-hand side of a BAUSERV manifold as standard. The control group can also be altered to fit to the right-hand side of a manifold simply by turning the control group elbows through 180° using the union fittings at the top and bottom of the pump. The pump motor may need to be rotated through 180° to minimise the space occupied by the control group. Primary connections can be applied from the side or bottom of the control pack.



TECHNICAL DATA

Ref.	Description	No.
1	A Rated Auto Pump	1
2	4-way Deflector Plate	1
3	Flow / Return Elbow	1
4	2mm Rubber Washer	2
5	1 1/2" Rapid Connection Nut	2
6	Elbow Flanged c/w Integrated Check Valve	1
7	3/4" Female BSP Flow and Return	2
8	3/8" Pocket	1
9	Temperature Gauge	1
R	Return from manifold / flow to heat source	N/A
H	Flow from heat source	N/A



BAUPACK-LT: PUMP CONTROL PACK

Manifold



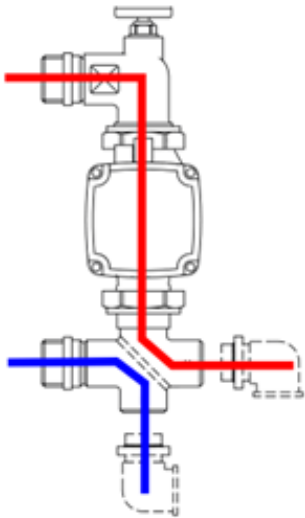
Property	Result
Maximum static pressure	10 Bar
Maximum differential pressure	3 Bar
Maximum temperature	95° C
Inlet connections	2 x 3/4" BSPF
Outlet connections	2 x 1" BSPM Swivel Joint
Overall dimensions (mm)	290 h x 150 w x 140 h (Excluding item.3)
Material	Nickel plated brass
Mixing Valve Kvs rating	15kW *subject to operating conditions
Typical Max. Heating Capacity	230V
Pump Operating Voltage	230V

INSTALLATION

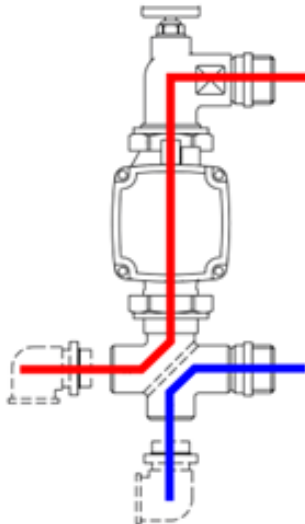
Prior to installation, manifold configuration must be determined as left or right-handed.  
Left-handed: (graphic 1)  
Right-handed: (graphic 2)

- Carefully remove from the packaging and check that all components are in place and that nothing has been damaged during delivery.
- The pump pack is supplied for connection to the left-hand side of the manifold but can be altered very simply for connection to the left-hand side. (See above)
- To change orientation: Loosen the pump rotating nuts (5) on the 4-way deflector plate (6) and rotate through 180 degrees. Re-tighten nut (5) after rotation. The joints use o-ring seals and care should be taken not to over-tighten them.
- Pipe connection orientation can be altered to suit using flow / return elbow (3) (supplied loose) fitted in either flow or return.
- A swivel joint is fitted to each side of the control group for connecting to the 1" F manifold tappings. Carefully offer up and screw the swivel joint threads evenly into the manifold using a 37mm A/F spanner: the use of a 31mm A/F spanner will also ensure that the connection to the pump mixer is kept tight. The joints use o-ring seals and care should be taken not to over-tighten them.
- Once connected, finish securing the manifold and pump pack to the wall if not already completed.
- The primary flow and return pipework can now be connected to the 2 x 3/4" F connections on the 4-way deflector plate. The flow connection is at the H and the return connection is at the R. It is recommended that ball valves are used to isolate this pipework where it is connected to the pump mixer.

Graphic 1



Graphic 2



# BAUPACK-LT: PUMP CONTROL PACK

Manifold



## COMMISSIONING

Filling the UFH system – The in-built non-return valve in the flow elbow allows you to fill the circuits from the upper flow rail drain and fill valve only.

Be aware that you cannot get the benefit of this feature when filling via the primary flow and return connections or the lower manifold rail drain and fill valve.

The pump pack, manifold and underfloor circuits can now be filled and commissioned in accordance with the manifold instructions. Prior to filling, a final check of all joints should be made to ensure no connections have loosened during transit.

The pump is supplied with a pre-connected 1m long 3-core lead assembly ready for connection to the electrical control system. Ensure that the pump is filled and vented, operate the control system to call for heat then select the desired pump setting.

The BAUSERV LT control pack comes pre-assembled ready for installation. Please ensure the pump connections are tightened before commissioning. These connections are equipped with EPDM seals.

The information on this datasheet is based on extensive experience, is intended to convey the best of our knowledge, is not legally binding and does neither constitute a contractual legal relationship nor a subsidiary obligation resulting from the bill of sale. The quality of our materials is guaranteed within the framework of our general terms and conditions. Our products may be used by professionals and/or experienced and accordingly technically skilled persons only. Users are not released from inquiring in case of uncertainties or from rendering professional workmanship. We recommend using a test surface first or a small area for initial, small-scale testing. Naturally, it is not possible to describe or foresee all possible current and future uses and peculiarities. Information that is assumed to be familiar to experts has been omitted. Please observe the current, technical, national and European standards, guidelines and data sheets regarding materials, substrates and the subsequent construction. Please contact us if you have any reservations or doubt. This version is rendered invalid if a new version is released. The most recent data sheets, safety data sheets and the terms and conditions are available from Bauserv Limited.